

ELKAY[®]


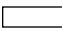

SPECIFICATIONS

Sturdibilt[®] Scullery Sink Square Corner Triple Compartment

GENERAL

Model No. SS _____ #14 gauge, type 304 stainless steel scullery sink. Compartments 14" deep. Square corner welded construction. Full length 8" high back-splash with 45° sloped top. 1-1/2" wide inward sloping top channel rims. Integral drainboard/s, sink compartments pitched to drain. Exposed surfaces polished to a satin finish.

Sinks supported on (4) LK251 stainless steel, 1-5/8" O.D. tubular legs, #16 gauge wall thickness. Adjustable bullet shaped feet.

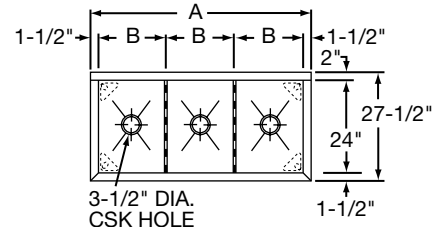
-  Shaded areas are models carried in stock with standard faucet location.
-  Non-shaded areas with specified dimensions are standard models which must be made to order – standard faucet location unless otherwise specified.
-  Last item in each group is custom. Fill in dimensions. Standard faucet location unless otherwise specified. Drainboards over 25-1/2" furnished with one tubular leg. Drainboards over 48" furnished with two tubular legs.

ALL DIMENSIONS IN INCHES.
SEE OTHER SIDE FOR DIMENSIONS IN MILLIMETERS.

(CHECK MODEL SPECIFIED):

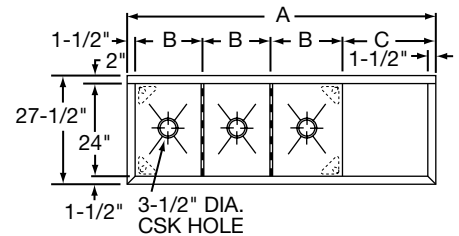
NO DRAINBOARD

Model Number	Dimensions	
	A	B
SS8345	48	15
SS8354	57	18
SS8360	63	20
SS8372	75	24
• SSC8300		



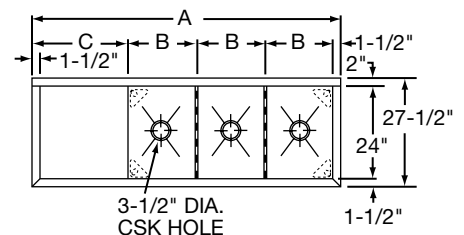
RIGHT DRAINBOARD

Model Number	Dimensions		
	A	B	C
SS8345R	70 1/2	15	24
SS8354R	79 1/2	18	24
SS8372R	97 1/2	24	24
• SSC8300R			



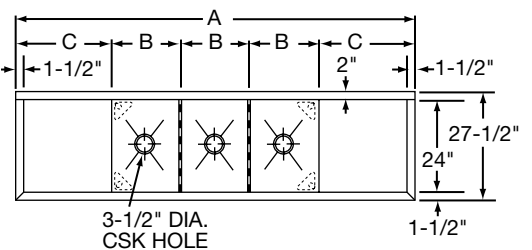
LEFT DRAINBOARD

Model Number	Dimensions		
	A	B	C
SS8345L	70 1/2	15	24
SS8354L	79 1/2	18	24
SS8372L	97 1/2	24	24
• SSC8300L			



RIGHT & LEFT DRAINBOARD

Model Number	Dimensions		
	A	B	C
SS8345LR	93	15	24
SS8354LR	102	18	24
SS8360LR	108	20	24
SS8372LR	120	24	24
• SSC8300LR			



INDICATE NUMBER OF FAUCET HOLES WHEN PLACING ORDER. (NON-STANDARD FAUCET AND OVERFLOW DRILLING LOCATIONS ARE AVAILABLE. SPECIFY ON DRAWING AT RIGHT.)

