

**CADET ELONGATED  
PRESSURE-ASSISTED TOILET  
1.6 gpf / 6.0 Lpf**

- 2462.016**
  - Vitreous china
  - Low-consumption (1.6 gpf/6.0 Lpf)
  - EverClean® surface inhibits the growth of stain- and odor-causing bacteria, mold, and mildew on the surface
  - Elongated bowl
  - Pressure-assisted siphon jet flush action
  - Fully-glazed 2-1/8" trapway
  - 10 x 12" water surface area
  - Metal chrome trip lever
  - Close-coupled flushometer tank\*
  - Speed Connect® tank/bowl coupling system
  - 2 bolt caps
  - 100% factory flush tested
  - 12" Rough-in
- 3481.016** Bowl with two bolt caps
- 4142.016** Tank complete with coupling components



**Nominal Dimensions:**

768 x 521 x 743mm  
(30-1/4" x 20-1/2" x 29-1/4")

Fixture only, seat and supply by others

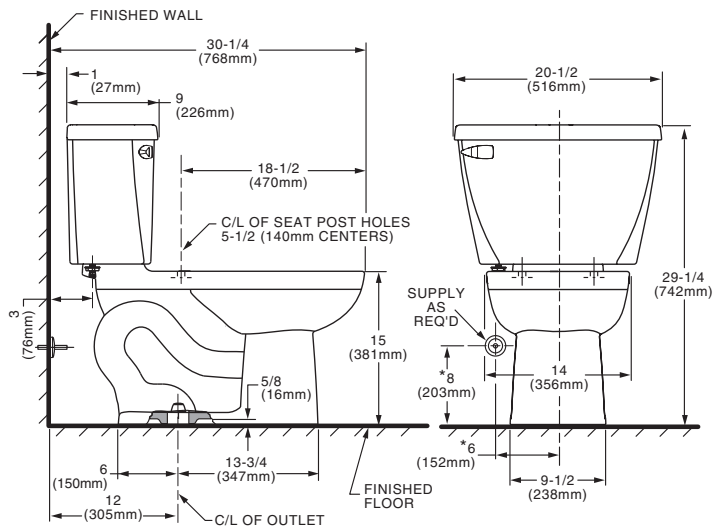
Recommended working pressure range  
25 psi - 80 psi

**Alternate Configurations Available:**

- 4142.600** Tank and tank cover only with tank cover locking device
- 4142.800** Tank and tank cover only with right hand trip lever
- 4142.900** Tank complete with right hand trip lever and tank cover locking device

**Compliance Certifications -**

**Meets or Exceeds the Following Specifications:**  
• ASME A112.19.2-2008 / CSH B45.1-08 for Vitreous China Fixtures



**NOTES:**

THIS COMBINATION IS DESIGNED TO ROUGH-IN AT A MINIMUM DIMENSION OF 305MM (12") FROM FINISHED WALL TO C/L OF OUTLET.  
\* DIMENSION SHOWN FOR LOCATION OF SUPPLY IS SUGGESTED. SUPPLY NOT INCLUDED WITH FIXTURE AND MUST BE ORDERED SEPARATELY.  
FOR ADDITIONAL INFORMATION REFER TO INSTALLATION INSTRUCTIONS SUPPLIED.

**IMPORTANT:** Dimensions of fixtures are nominal and may vary within the range of tolerances established by ASME A112.19.2-2008 / CSH B45.1-08. These measurements are subject to change or cancellation. No responsibility is assumed for use of superseded or voided pages.

**To Be Specified:**

- Color:  White  Bone  Linen  Silver  Black
- Seat: American Standard #5324.019 "Rise and Shine" (with easy to clean lift-off hinge system) solid plastic closed front seat with cover.
- American Standard #5321.110 EverClean® seat with Slow Close snap-off hinges.
- Alternate Seat:
- Supply with Stop: