

SPECIFICATION:

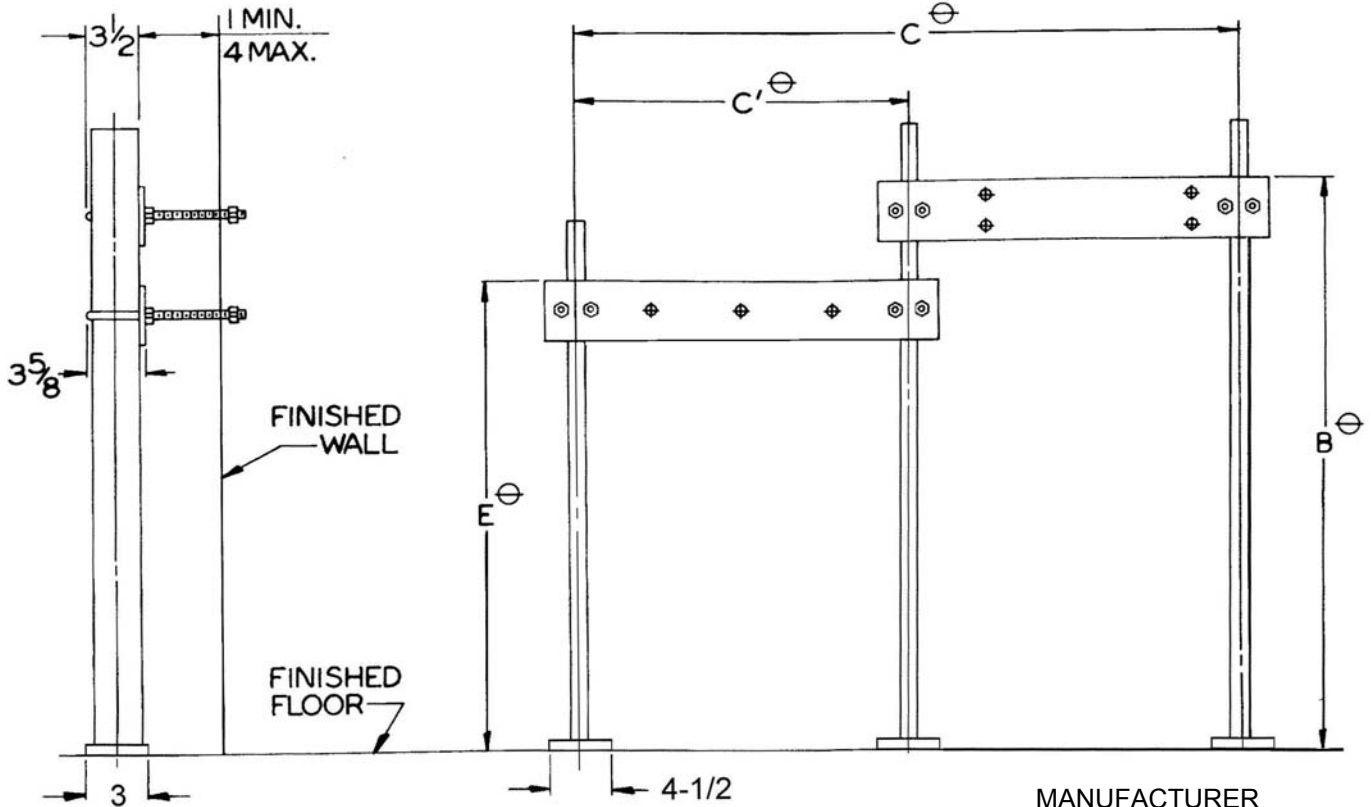
JOSAM 17550-WCBL SERIES FLOOR-MOUNTED BI-LEVEL WATER COOLER CARRIER WITH HANGER PLATES, ADJUSTABLE SUPPORTING RODS, STRUCTURAL UPRIGHTS AND WELDED FEET.

**WATER COOLER CARRIER
FLOOR-MOUNT HANGER PLATE**

SERIES 17550-WCBL

REUSABLE ALIGNMENT TOOL AVAILABLE

FORMERLY 17910 SERIES



MANUFACTURER

NUMBER

SIZE

NAME

B _____
 C _____
 C' _____
 E _____
 Δ _____
 Δ' _____

RIM HEIGHT 'Δ' BASED ON 'B' AND 'E' DIM SHOWN

RECOMMEND ALL FEET BE SECURED TO FLOOR WITH 1/2" BOLTS AND ANCHORS BY OTHERS.

⊕ VARIABLE – DEPENDS ON FIXTURE

UTILIZE A SINGLE ALIGNMENT TOOL TO ALIGN A PAIR OF UPRIGHTS. IF YOU WISH TO BRACE ALL THREE UPRIGHTS SIMULTANEOUSLY, TWO TOOLS ARE NECESSARY.



-WCBL BI-LEVEL WATER COOLER CARRIER
 -10 STUDS FOR WALLS OVER 4"
 (SPECIFY WALL THICKNESS)

DRAWING No. 05/10/08

A-13634-K

JOSAM COMPANY
 MICHIGAN CITY, INDIANA

NOTES: