

SPECIFICATION:

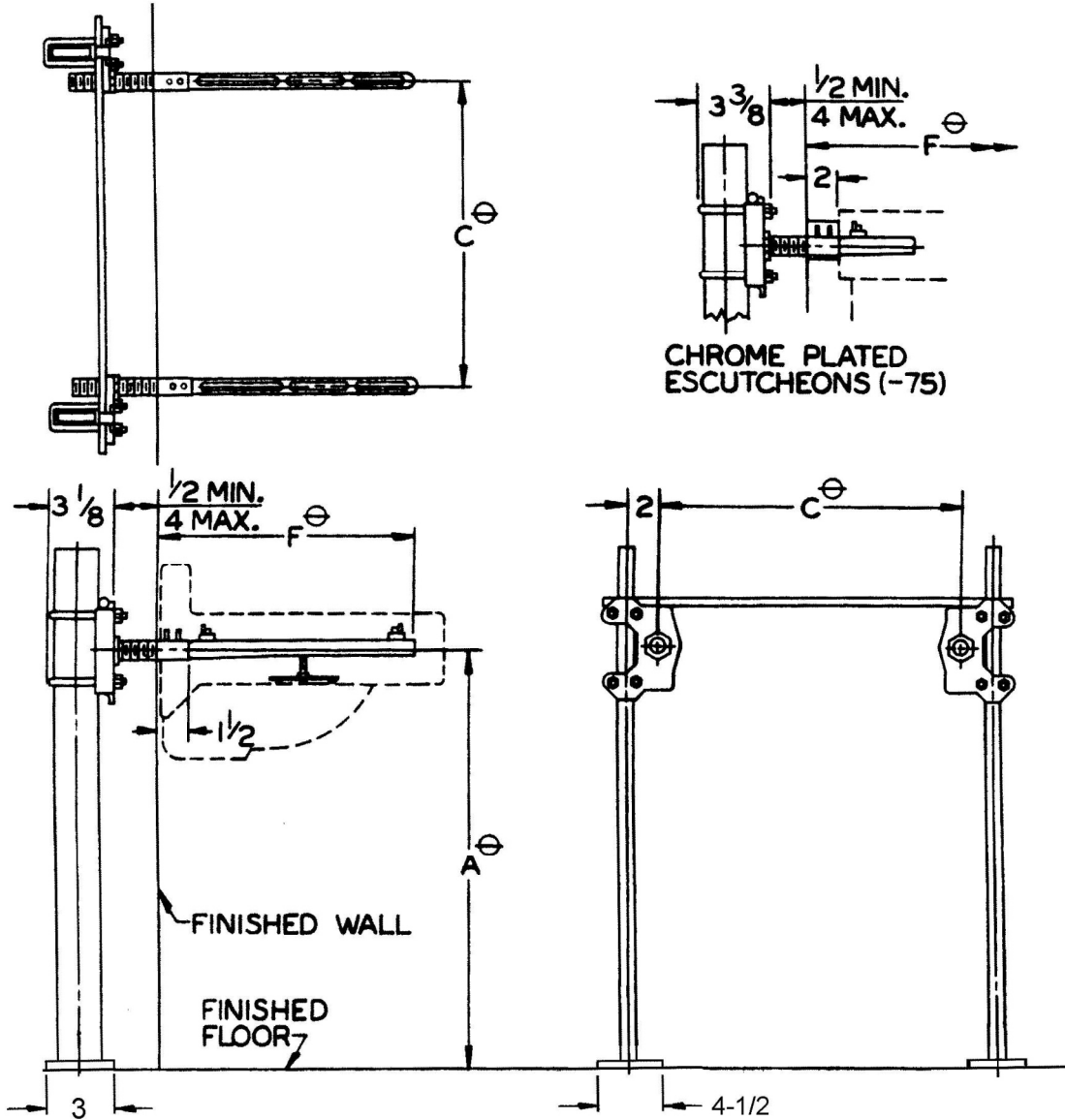
JOSAM 17100 SERIES FLOOR-MOUNTED, SINGLE LAVATORY CARRIER WITH CONCEALED ARMS, LEVELING AND SECURING SCREWS, STRUCTURAL UPRIGHTS AND WELDED FEET.

**LAVATORY CARRIER
FLOOR-MOUNT CONCEALED ARM**

SERIES

17100

REUSEABLE ALIGNMENT TOOL AVAILABLE



MANUFACTURER _____
 NUMBER _____
 SIZE _____
 NAME _____

A _____
 C _____
 F _____
 Δ _____
RIM HEIGHT 'Δ' BASED ON 'A' DIM SHOWN

RECOMMEND ALL FEET BE SECURED TO FLOOR WITH 1/2" BOLTS AND ANCHORS BY OTHERS.

Θ VARIABLE – DEPENDS ON FIXTURE STANDARD ADJUSTABLE SLEEVE 6-1/2"

- ▼ -BB BACK-TO-BACK CARRIER
- 10 EXTENSION SLEEVES LONGER THAN STANDARD (SPECIFY WALL THICKNESS)
- 60 VALVE PLATE FOR ATTACHING TO UPRIGHT

- 67 CONCEALED ARM CARRIER FOR WHEELCHAIR LAVATORY
- 75 2" CHROME PLATED ESCUTCHEONS
- 76 4" CHROME PLATED ESCUTCHEONS
- 77 6" CHROME PLATED ESCUTCHEONS

▼ SEPARATE SUBMITAL FOR THIS OPTION AVAILABLE

DRAWING No.

A-08201-K

JOSAM COMPANY
 MICHIGAN CITY, INDIANA

NOTES: